

Model PP750

Pre-charge Pneumatic Air Pistol

HANDLING & INSTRUCTIONS MANUAL



PLEASE READ ALL INSTRUCTIONS AND WARNINGS IN THIS MANUAL BEFORE HANDLING OR SHOOTING THIS AIR PISTOL.

ALWAYS USE CAUTION WHEN OPERATING THIS AIR GUN.

BUYER AND USER SHOULD HAVE THE DUTY TO OBEY ALL LAWS ABOUT THE USE AND OWNERSHIP OF THIS AIR PISTOL.

REMEMBER THIS AIR PISTOL IS HIGHLY POWERED AND INTENDED FOR ADULT USE ONLY.

ALWAYS FOLLOW THESE SAFETY WARNINGS

⚠ WARNING: Not a toy. This air pistol is intended for **ADULT USE ONLY**. Misuse or careless use may cause serious injury or death.

⚠ WARNING: **DO NOT** brandish or display this air pistol in public --- it may confuse police and others thinking it is a firearm. **DO NOT** change the coloration and markings to make it look more like a firearm. That is dangerous and may be crime.

⚠ WARNING: **WHATEVER THE CONDITION IS, NEVER POINT THIS AIR PISTOL AT ANYONE EVER.**

⚠ WARNING: Lead pellets. Do not inhale dust or put pellets in mouth. Wash hands after handling. This product contains lead, a chemical known to public to cause cancer and birth defects (or other productive harm).

⚠ WARNING: Use only compressed air in this air pistol. Use no other gasses---including oxygen, which can cause a fire or explosion that may result in serious injury or death.

⚠ WARNING: This air pistol could fire when dropped or jarred, with or without the safety engaged.

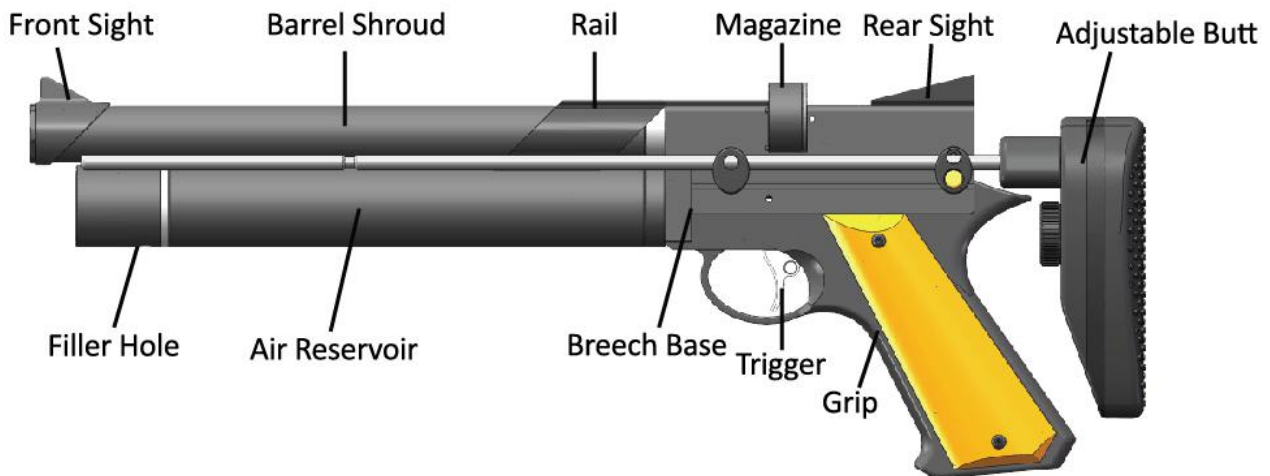
Before using your new air pistol check if it is fully charged and abide the below basic safety rules:

1. Treat every pistol as it is loaded.
2. Never point the pistol at anyone, or allow anyone to point a pistol at you, even if you know it is not loaded.
3. Always carry the pistol so that the direction of the muzzle is under control, even if you stumble.
4. Always be sure of your target and what lies behind it before firing your pistol.
5. Never leave a loaded pistol unattended.
6. Beware of targets that tend to cause ricochets.
7. It is recommended that eye & ear protection is worn when charging the cylinder and when shooting.

Please read this owner's manual completely. And remember that an air pistol is not a toy. Always carefully follow the safety instructions in this manual and keep this manual in a safe place for future use.

PARTS OF YOUR NEW AIR PISTOL

Model: PP750



PP750 is a multi-shot, pre-charged, manual loading PCP pistol.

It shoots great features.

- ✓ High Shooting Accuracy
- ✓ Great Gas-saving Capability with High Usage Rate
- ✓ Simple Structure, Easy Handling and Good stability
- ✓ Exquisite Workmanship and Excellent Appearance
- ✓ Built-in Pressure Gauge to Monitor the Air Reservoir Pressure
- ✓ Standard quick fill adaptor

SPECIFICATIONS

MODEL	PP750
CALIBER	.177(4.5mm)/.22(5.5mm)
VELOCITY	.177(4.5) 700fps/.22(5.5) 500fps
MAGAZINE CAPACITY	.177(4.5) 9 SHOTS/.22(5.5) 7 SHOTS
BARREL	204mm
MAXIMUM PRESSURE	25MPa/250Bar
RAIL	12mm DOVETAIL
LENGTH*WIDTH*HEIGHT	388*32*155(mm)

OPERATING INSTRUCTIONS

1. MANUAL SAFETY



FIG 1 SAFE POSITION

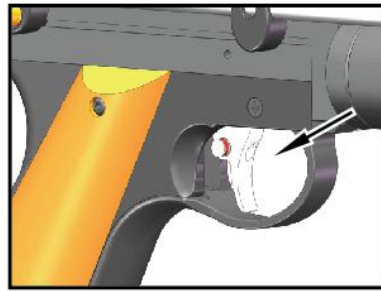


FIG 2 FIRE POSITION

2. FILLING THE PISTOL

Fit the attached fill adaptor to the socket coupler of your charging equipment, which must incorporate a pressure gauge (See FIG 1 to fit fill adaptor).

Ensure both fill adaptor and the filler hole are clean from dirt, then insert fill adaptor into filler hole (See FIG 2 to insert fill adaptor).

We recommend you keep 11MPa/110Bar pressure to the gas cylinder. Do not exceed its maximum pressure 25MPa/250Bar.

2.1 Filling the Air Pistol with a High Pressure Tank

- Follow FIG 3 to fit the fill adaptor.
- Follow FIG 4 to insert fill adaptor to your pistol.
- Slowly open the valve on your tank and start filling the air pistol SLOWLY. Filling too quickly will cause heat buildup that can affect the accuracy of the filling pressure.
- Watch gauges on your air pistol and the scuba tank until the reasonable pressure is reached.
- DO NOT EXCEED ITS MAXIMUM PRESSURE 25MPa/250Bar.
- Turn the valve on your tank off when the reasonable pressure is reached.
- BLEED RESIDUAL air in fill hose COMPLETELY to avoid hose whip and possible injury.
- Disconnect fill adaptor from fill hole on the air pistol.

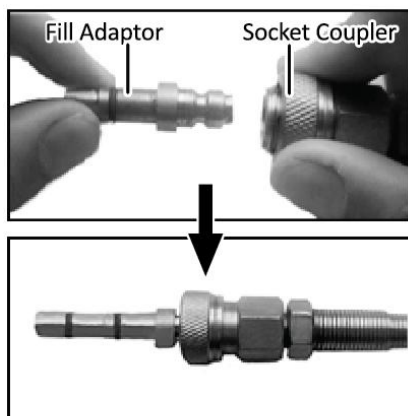


FIG 3 FIT FILL ADAPTOR

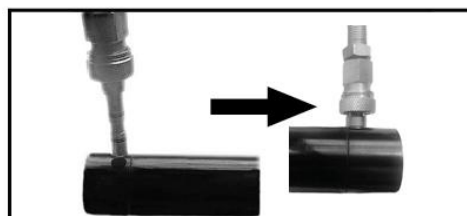


FIG 4 INSERT FILL ADAPTOR

2.2 De-gasing the Air Pistol

Your PP750 air pistol, like most PCP air guns, is best stored with some pressure in the reservoir. This keeps seals in the air pistol forced against the sealing surface and saves some air for next time fill or use. In the event you want or need to de-gasing the air pistol follow the dry fire method.

Bleed all the air by repeatedly cocking and dry-firing with the air pistol pointed in a SAFE DIRECTION until pressure gauge on your air pistol shows ZERO and air cannot be heard when the shot is fired.

NOTE: Turn on exhaust valve on your filling equipment before removing fill adaptor from filler hole, and make sure the hose has already exhausted. Then turn off the exhaust valve. The air reservoir on your PP750 air pistol is not replaceable. DO NOT INTEND TO DISMANTLE ANY PARTS ON YOUR AIR PISTOL IN ANY SITUATION.

3. LOADING PELLET

- Turn the magazine counterclockwise to the end and fasten it by hand. (See Step 1)
- Put the pellet into the magazine according to the pointed-end direction in Step 2. (See Step 2)
- Turn the magazine cap on clockwise, load the pellet until fullfill the magazine.

(See Step3 & Step4)

- It holds 9 pellets for Cal.4.5, 7 shots for Cal.5.5.

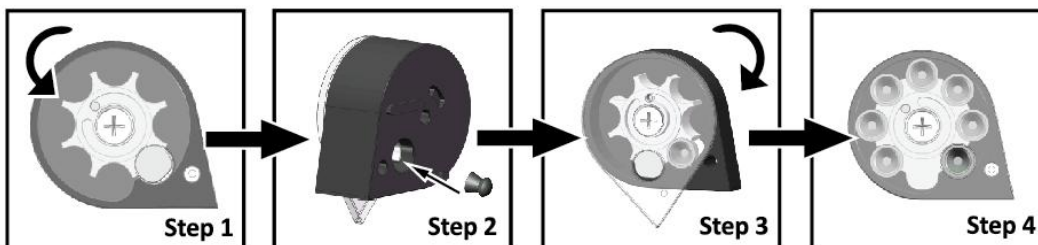


FIG 5 MAGAZINE-FILLING PROCEDURE

- Check if the air pressure in your gas cylinder is in a reasonable range.
- Point muzzle in a SAFE DIRECTION when loading. NEVER POINT IT AT ANYONE.
- Make sure the safety is "ON" before loading.

The followings are the loading procedure for PP750:

- When you are holding the air pistol, make sure it is not cocked and unloaded and check if you take the same caliber pellets as your barrel (See Step 5).
- Pull the bolt backward to cock the pistol (The bolt cannot automatically return forward). Now the loading port can be seen in Step 6.
- Align the magazine bugle into breech slot and assemble the magazine (See Step 6).
- Push bolt forward to the end (See Step 7).
- After shooting out all pellets, pull the bolt to the end, dismantle the magazine and reload.
- Disconnect fill adaptor from fill hole on the air pistol.

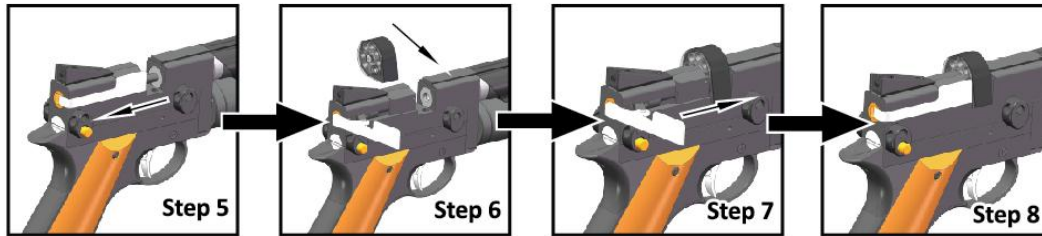


FIG 6 LOADING PROCEDURES

4. Adjustable-Butt

4.1 Front-back Adjust

- Press the button as step 5, use another hand to pull or push the butt (See Step 9).
- When you sound “ka”, it is in the correct position (See Step 10).

4.2 Up-down Adjust

- Loosen the screw and move the butt down or up according to what is needed (See Step 11 & Step 12).
- Tighten the screw when the butt is adjusted.

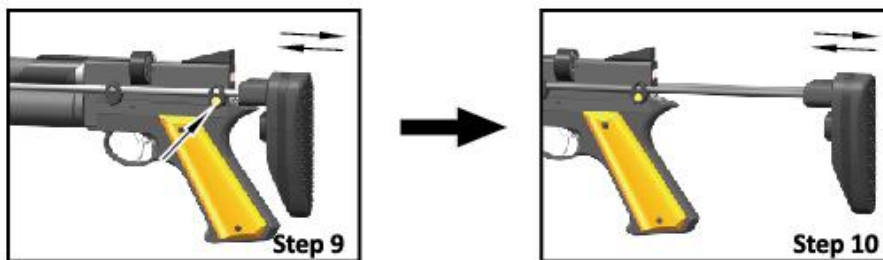


FIG 7

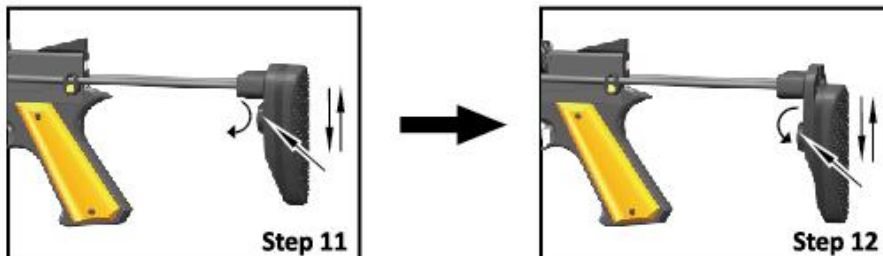


FIG 8

MAINTENANCE

⚠ WARNING: Never shoot the air pistol when the air cylinder is empty. Failure to obey this instruction could result in damage to your air pistol. Never lubricate inside the barrel as this may affect the shooting accuracy and firing intensity in a negative manner.

Lubricating and Cleaning

Every 3 months or 1000 shots apply mineral based oil sparingly to the following parts:

- The surface of valve pin
- The seal of loading port

It is recommended to clean the barrel with a cleaning rod every 3 months or every 1000 shots.

Never lubricate inside the barrel.

Before you begin oiling or cleaning your air pistol, always check to make sure it is unloaded.

Always be sure your air pistol barrel is clean and not blocked.

After cleaning ensure that no cleaning patch or other obstruction remains in the barrel.

Annually, take your air pistol to a gunsmith even if it seems to be working well, since some issues in your air pistol may not be apparent from external examination.

Take your air gun to a gunsmith if water, sand, etc. enters the internal mechanism of the air gun, for complete cleaning.

Dangerous conditions may occur if you do not keep your air gun clean and working properly.

Quick Fill Adaptor Seal Replacement

After a period of time, the fill adaptor seals will need to be replaced. The need for this will become noticeable if air is heard leaking at fill adaptor or the adaptor ejected from pistol fill hole when charging. Always ensure to replace both seals.

Intake Valve O-Ring Replacement

After a period of time, the intake valve seal will need to be replaced. Once air is heard leaking from intake valve, it is the sign of immediate replacement of the intake valve seal.

- Make sure there's no residual high pressure air in air reservoir, and wait until gauge needle points ZERO.

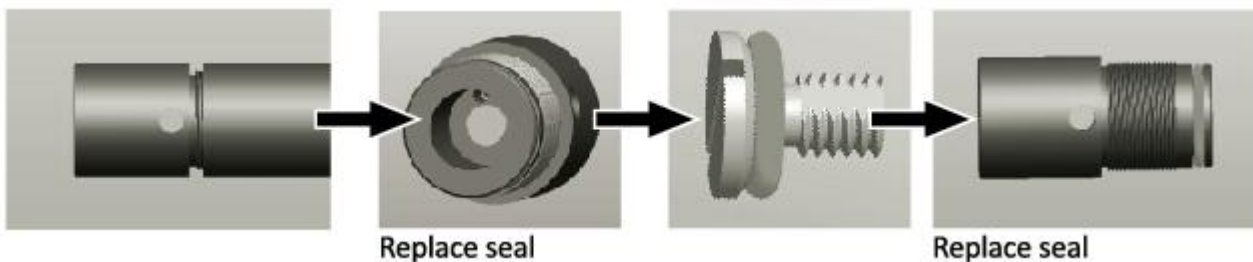
- The followings are replacement procedures of intake valve seal.

Dismantle the intake valve.

Remove intake valve screw and the used seal, and replace it and re-assemble.

- Make sure all the threads are screwed in during the assembly.

- It is recommended to seek a competent gunsmith for help to replace seal. If you need to replace it yourself, make sure there's no high pressure in the air reservoir and the gauge needle has pointed to zero.



SAFETY MEASURES & WARNINGS

- ❖ This air gun will shoot if cocked, loaded and trigger pulled.
- ❖ Air guns are not toys. Never let young children use an air gun unsupervised. Adult supervision is strictly required during use. Misuse or careless use may cause serious injury or death.
- ❖ Learn how your air gun operates and safe air gun handling procedures before loading and using it.
- ❖ ALWAYS USE EYE & HEARING PROTECTION AND MAKE BYSTANDERS USE THE SAME. Failure to do so may result in eye injuries and permanent hearing loss.
- ❖ Do not point at anything you do not intend to shoot even though the air gun is unloaded. Always keep the air gun pointed in a safe direction.

- ❖ Never pull an air gun toward you by the muzzle.
- ❖ Always aim at a safe target, taking care that it does not conceal any other object.
- ❖ Before you shoot, consider where the pellet will travel should you miss your intended target, thus ensuring no damage or harm could result.
- ❖ Be sure of your target before you pull the trigger. Never shoot at sounds.
- ❖ When shooting, always have a safe shooting range, that is; have a safe area for shooting, a safe distance between you and the target, and a safe backstop to trap the pellets and hold the target.
- ❖ Do not shoot at a target, which allows ricochets or deflections. Do not shoot into or at water.
- ❖ Do not shoot at or near power lines or insulators. Be especially careful in wooded areas where power lines may not be as visible.
- ❖ Do not load the air gun until you are ready to shoot.
- ❖ Always keep your fingers away from the trigger & muzzle during cocking and handling.
- ❖ Do not run or jump when carrying a loaded or cocked air gun. A loaded or a cocked air gun should never be carried inside a vehicle, house, camp or public place. Never climb a tree or fence or jump a ditch with a loaded air gun. In such a case, first unload it and hand the air gun to a friend or place it on the ground on the other side of the obstacle before crossing yourself.
- ❖ When transporting the air gun, keep it unloaded.
- ❖ Do not put the air gun away loaded and unattended.
- ❖ Always check to see if the air gun is unloaded when getting it from another person or from storage.
- ❖ Always keep the air gun and/or pellets out of the reach of children. Keep the air gun and pellets in separate places, better if under lock and key.
- ❖ Do not attempt to disassemble or tamper with your air gun. Use a competent gunsmith. Many air guns contain powerful springs or high pressure air cylinders which can cause serious injury if released in an uncontrolled manner.
- ❖ Always handle and treat your air gun as though it were loaded.
- ❖ Improper use or handling of air guns is not the responsibility of the manufacturer or distributor, under any circumstances. The user is responsible for any harm, which may be caused.
- ❖ Think first, shoot second.
- ❖ Be safe not sorry. Respect other's property.
- ❖ Air guns should never be used under the influences of alcohol or drugs.