



reximex



throne Gen2

PCP AIRGUN OWNERS MANUAL

.177 Cal. - .22 Cal. - .25 Cal

**READ ALL INSTRUCTIONS AND WARNINGS
IN THIS MANUAL BEFORE USING THIS AIRGUN**

INDEX



reximex

Page	Content
1	Warranty
1	Warning
2	Safety Review
3	General Instructions & Operating Safety
3	Manual Safety
4	Operating Instructions
4	A. Filling The Air Cylinder
5	B. Loading The Airgun
7	C. Un-Loading & Un-Cocking The Airgun
8	D. Barrel Replacement
8	E. Power Adjustment
10	F. Jammed Ammo
10	G. Trigger Adjustment
11	H. Butt-Pad Adjustment
11	I. Cocking Lever Replacement
12	J. Maintenance
12	K. Storage
13-15	Mechanism Parts & Part Numbers

1. WARRANTY

All REXIMEX PCP Airguns carry a One Year Warranty against faulty workmanship and defective materials. Contact the dealer from which you purchased the airgun if it becomes necessary. If the airgun develops a defect within the warranty period, contact the dealer from whom it was purchased. The guarantee does not cover any damage caused by tampering with the airgun.

This airgun should only be disassembled by factory-authorized repairmen.

2. WARNING!

WARNING! NOT A TOY, THIS AIRGUN IS RECOMMENDED FOR ADULT USE ONLY. MISUSE OR CARELESS USE MAY CAUSE SERIOUS INJURY OR DEATH. MAY BE DANGEROUS UP TO 800 YARDS (732 METERS).

WARNING! DO NOT BRANDISH OR DISPLAY THIS AIRGUN IN PUBLIC. IT MAY CONFUSE PEOPLE AND MAY BE A CRIME.

DO NOT CHANGE THE COLORATION AND MARKINGS TO MAKE IT LOOK MORE LIKE A FIREARM. POLICE AND OTHERS MAY THINK IT IS A FIREARM AND IT MAY BE A CRIME.

YOU AND OTHERS NEXT TO YOU SHOULD ALWAYS WEAR SHOOTING GLASSES TO PROTECT YOUR EYES.

BUYERS AND USERS HAVE TO OBEY THE LAWS ABOUT THE USE AND OWNERSHIP OF THIS AIRGUN

WARNING! NEVER ATTEMPT TO DISASSEMBLE THIS AIRGUN WHILE IT IS CHARGED!

FAILURE TO OBEY THIS INSTRUCTION COULD RESULT IN PERSONAL INJURY OR DAMAGE TO THE AIRGUN!

3 SAFETY REVIEW

- Never use the airgun if you are intoxicated or under the influence of drugs.
- Even if there is no pressure sign on the manometer, never disassemble the pressurized tube!
- Never fire the airgun when it is empty of air or when the air cylinder is removed!
- Never point the airgun at anyone, or allow anyone to point an airgun at you!
- Treat every airgun as if it is loaded even if you know it is not loaded!
- Always carry the airgun so that the direction of the muzzle is under control, even if you stumble.
- Always be sure of your target and what lies behind it before firing your airgun.
- Never leave a loaded airgun unattended.
- Beware of targets that tend to cause ricochets.
- It is recommended that eye protection is worn when charging the air cylinder.
- Always use caution when operating this airgun.
- Only use dry cloth to clean any dirt inside the barrel for various reasons (humidity, dust, etc.)
- In your airgun, only use synthetic or mineral base high viscosity oil in order not to create filling effect with lower tolerance parts.
- Learn and obey the laws in your location.
- Be responsible in your use of this weapon!

REXIMEX PCP airguns are designed specifically for use with DRY COMPRESSED AIR. NO OTHER GAS OR GAS COMBINATION CAN BE USED.

The Airgun may be filled by a Diving Scuba Tank or a suitable compressor
MAXIMUM SAFE WORKING PRESSURE (SWP): 250 BAR



DANGER OF EXPLOSION!

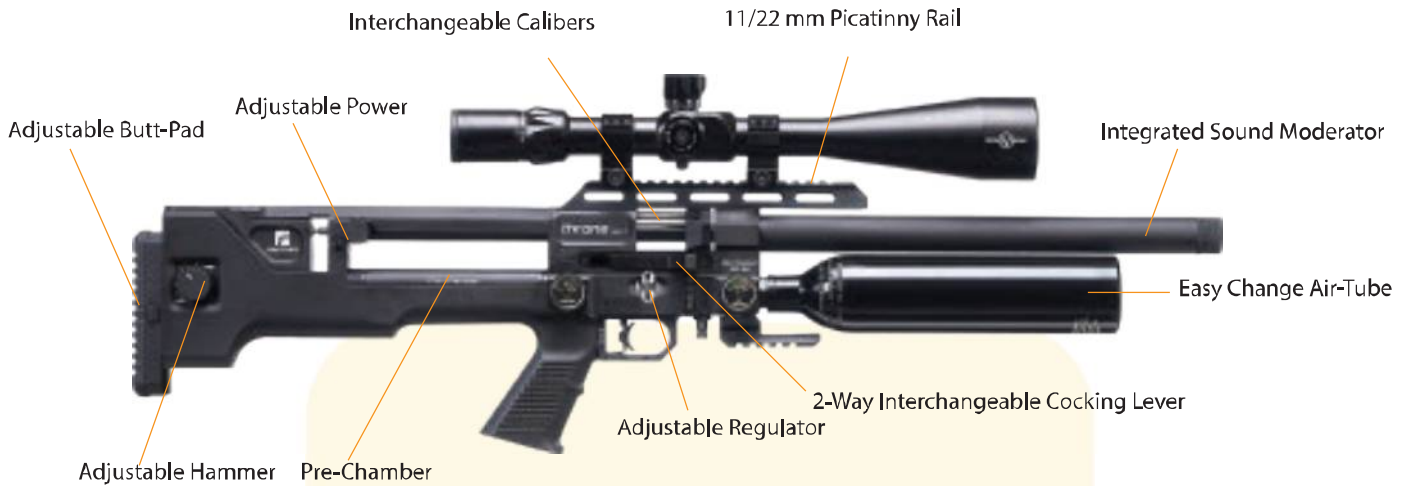
THE AIR TANK POSES THE EXPLOSION RISK IF IT GETS HEATED SUBJECT TO SUNTRAY FOR EXTENDED PERIOD OF TIME.

(Max. + 40° / Min. -05°)

OTHERWISE, THE AIRGUN SHOULD BE LEFT TO COOL DOWN IN A COOL ENVIRONMENT RECOMMENDED TO BE TRANSPORTED UNDER MAXIMUM 80 BARS PRESSURE DURING FLIGHTS.

4 GENERAL INSTRUCTIONS & OPERATING SAFETY

- REXIMEX Airguns should be fitted with a scope or alternate optic sights before use.
- Before using your airgun, read and abide by the basic safety rules.



MANUAL SAFETY

CAUTION: Like all mechanical devices, airgun safety can fail. Even when the safety is on "SAFE" you should continue to handle the airgun in a safe manner.

Locate the safety switch of the airgun directly below the trigger guard. Safety switch can be set to "S" (SAFE) and "F" (FIRE) positions manually. The Letters "S" (SAFE) and "F" (FIRE) are located below the trigger guard.

A - Airgun on "S" (SAFE) Position

To set the safety on, push the safety switch in up position below the trigger guard.

In this position the trigger cannot be pulled and the airgun cannot be fired.



B - Airgun on "F" (FIRE) Position

To set the safety off, push the safety switch in down position below the trigger guard.

In this position the trigger cannot be pulled and the airgun cannot be fired.



WARNING! KEEP THE AIRGUN IN THE "SAFE" POSITION UNTIL YOU ARE READY TO SHOOT. WHEN READY PUSH THE SAFETY SWITCH TO "FIRE" POSITION

5 OPERATING INSTRUCTIONS

A. FILLING THE AIR CYLINDER

1. Before filling the air cylinder; make sure the airgun is on "S" (SAFE) position, no pellets are loaded in the air airgun and/or barrel and magazine is not mounted in the gun.

NOTE: If the air cylinder pressure is at "0" Bar, then it will be necessary to cock the airgun to remove the force of the Hammer against the firing Valve. Otherwise, the air will pass through the firing Valve out the barrel, and the air cylinder will not pressurize.

2. Take all safety measures before filling the air cylinder. It is compulsory for the user and to wear eye & ear protection when filling the air cylinder.

3. While filling in the air cylinder; the pressure in the air cylinder must be monitored from the air gauge of the hand pump or scuba charging kit. Do not look at the air gauge on the air cylinder during filling process. Instead, reference the gauge on your fill device.

Assemble the filling equipment hose with the filling probe that is provided inside the box. Pull back on the outer sleeve on the quick connect fitting to release it from your airgun, when your tube is filled. If you hear SOUND of air during the first filling, move the probe and enable the O rings to be air-proof. (if the leakage continues, O rings might be deformed)



Overfill

In case of overfilling, BURST DISC is located on your airgun. This disc will tear if the air pressure on your airgun reaches to a dangerous level and this will prevent any potential over pressure danger.

In case the safety burst disc is torn, a spare burst disc is included in your box and it needs to be changed.

B. LOADING THE AIRGUN

CAUTION: Never re-use ammunition.

Review the entire manual, including the section on Safety, before firing your airgun.

CAUTION: Know your airgun's loading mechanism for safest use! Pellets can either be loaded one by one using a single shot tray, or multiple pellets may be loaded using the rotary magazine. With the magazine placed correctly, EVERY action of closing the side lever WILL place a pellet into the chamber.

DO NOT TRY TO CLOSE THE SIDE LEVER WHEN THE MAGAZINE IS NOT LOADED!!!

Do not re-cock the airgun while there is pellet loaded inside the chamber!! This will load multiple pellets at the same time and may damage your airgun.

Removal of the magazine WILL still leave the chambered pellet in place unless the airgun is fired.

Loading the Magazine

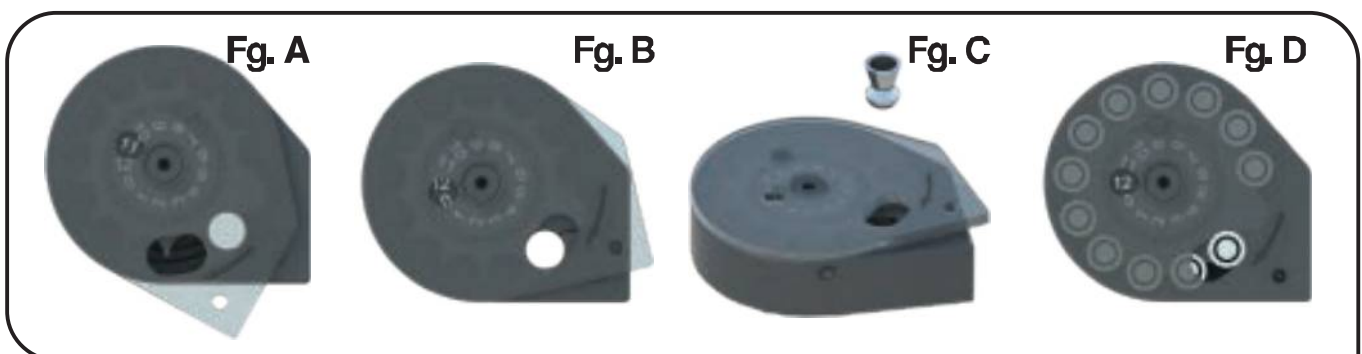
Make sure your airgun is on "SAFE" position and is pointed to a SAFE DIRECTION.

If the magazine is fitted on the airgun, remove it to begin loading or Unloading.

Move the clear cover over the catch point and rotate in the direction of the arrows (clockwise) Fig. A. Place a finger under the magazine covering the hole, place the first pellet in the magazine nose first, make sure that the pellet does not protrude out of the magazine. If the pellet does protrude, simply push the pellet inward. Fig. B

Rotate the cover counterclockwise and place the remaining pellets into the magazine. Upon completion rotate the cover until it comes to rest. Fig. C

If it looks like Fig. D. The magazine is now ready for use.



Placing the loaded Magazine on the Airgun & Firing Safely

NOTE: Following these directions will load your airgun and it will be ready to FIRE. Make sure your airgun is on "SAFE" position and is pointed to a SAFE DIRECTION.

- To fit the magazine into the airgun, pull the cocking handle backwards until it stops.
- With the cover of the magazine facing the butt of the airgun, insert the magazine from the right side and push it inward until it snaps into place.
- The line on the back of the magazine should align with the line on the loading slot of the airgun.

YOU WILL DAMAGE THE MAGAZINE IF IT IS NOT PLACED CORRECTLY

- Pull the cocking handle to its rear-most position.
- Push the cocking handle forward fully and ensure that it lays flat against the airgun in order to chamber a pellet.
- After following these steps and reading the entire manual, including the section of safety procedures, your airgun is now loaded and ready to fire.

DO NOT CLOSE THE COCKING HANDLE / MAGAZINE RELEASE BOLT UNTIL YOU ARE READY TO FIRE.

- Aim at your intended target and disengage the safety and prepare to shoot.
- Pull the trigger gently and the airgun will fire.
- To reload airgun, pull the cocking handle to its rear-most position. This will index the magazine and align the next pellet with the barrel. Then, repeat previous steps.



C. UN-LOADING & UN-COCKING THE AIRGUN

Un-loading & Removing the Magazine

1. Pulling the cocking handle to its rear-most position and Pushing it forward fully while the magazine is loaded will result in chambering a pellet.
2. To unload the airgun, it is recommended to fire the pellet in a **SAFE DIRECTION**.
3. Pull the side lever back to the rear position.

CAUTION: This action **WILL** cock the airgun.

4. Push the magazine out of the receiver from the left side.
5. Un-cock the airgun for safe storage.

Un-Cocking

When you are finished shooting, remove the magazine as instructed and un-cock the airgun by following the steps below:

1. Point the airgun in a **SAFE DIRECTION**.
2. Take the airgun on "**FIRE**" position.
3. Pull the cocking handle back to its rear-most position.
4. While firmly holding the cocking handle in the rear position, pull the trigger.
5. Continue to hold the trigger back while sliding the side lever forward to the latched position.
6. Release the trigger.
7. Put the airgun on "**SAFE**" position.

WARNING! EVEN THOUGH YOU FOLLOW THE UNLOADING PROCEDURE, CONTINUE TO TREAT THE AIRGUN AS IT IS LOADED. NEVER POINT THE AIRGUN AT ANYTHING YOU DO NOT INTEND TO SHOOT.

D. BARREL REPLACEMENT

1. First remove the barrel shroud. (Clockwise)
2. Remove the screw holding the barrel and pull out the barrel.
3. Remove the pellet pusher with the key included inside the box.
4. Attach the replacement caliber pellet pusher and tighten using the wrench. (Clockwise)
5. Then place the replacement caliber barrel.
6. Tighten the nut that holds the barrel
7. Put the outer barrel back into place again and tighten. (Clockwise)

Make sure the pellet pusher and the barrel is the same caliber.



E. POWER ADJUSTMENT

• Hammer Adjustment

Simply rotate the Hammer Spring Tension wheel while the airgun is un-cocked in the either direction and set the desired hammer tension level.



• Valve Adjustment

Simply rotate the power knob while the airgun is un-cocked in the "+" or "-" direction and set the desired power level.



• Regulator Adjustment

Regulator pressure may be raised (+) at any time including when there is air in the system.

• Raise the regulator pressure by simply twisting the wheel in (+) direction.



ATTENTION! DO NOT LOWER (-) REGULATOR PRESSURE BEFORE COMPLETELY RELEASING THE AIR IN THE SYSTEM (INCLUDING THE REGULATOR & PRE-CHAMBER)

IF YOU DO, YOUR AIRGUN MIGHT BE DAMAGED AND WARRANTY WILL BE VOID!!!

ATTENTION! There may be air leakage when removing the tube.

To release the air in the Regulator & pre-chamber, pull the cocking lever and push the trigger. (Continue this process until the air in the regulator is completely released.)

1. Remove the Air tube or De-gas air in the system completely.
2. Make sure both Gauges are at 0 bar (psi)
3. Lower the regulator pressure by simply twisting the wheel all the way in (-) direction with Allen wrench.
4. Fill with air before raising regulator pressure slowly to requested level.

F. JAMMED AMMO

A jammed ammo is usually caused by firing the airgun when the air pressure is too low.

Please, do not operate your airgun below 100 bar (1500 PSI) air pressure.

CAUTION: Never try to look through the barrel to see if a jammed ammo is cleared.

Make sure the airgun is on "SAFE" position and pointed in a SAFE DIRECTION.

- Pull the cocking handle back to its rear-most position.
- Insert a clearing rod of the proper size into the barrel, starting from the muzzle (Barrel may be damaged if the clearing rod is not proper size)

NOTE: Cocking handle must be at its rear-most position for the jammed ammo to clear the breech when it is pushed out by the ramrod.

- Push or tap ammo towards the breech end of the barrel until the pellet is extracted from the chamber.
- Operate carefully in order not to damage the chamber sealing O-ring.
- Remove and discard the ammo.
- Do not reuse that ammo.

If you are not successful removing the jammed ammo following above instructions, take no further action. REXIMEX Technical Service or an Authorized Service Station will unjam your airgun (Free of charge during the warranty period).

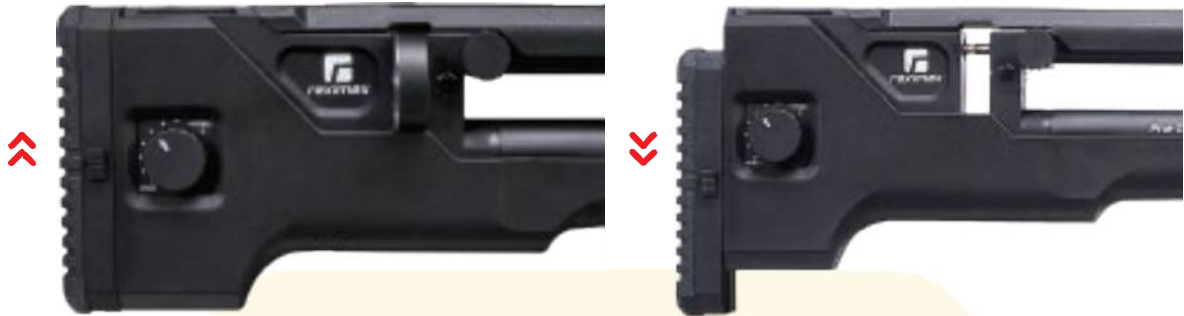
G. TRIGGER ADJUSTMENT

- First, remove the grip area using an Allen wrench. (Bottom of the grip)
- After removing the grip area successfully, trigger sensitivity adjustment may be done using an Allen wrench as shown on the picture.
- Re-mount the grip using the Allen wrench.



H. BUTT-PAD ADJUSTMENT

- Adjust up and down with the help of the buttons on the side of the pad.



WARNING! DO NOT MODIFY OR ALTER YOUR AIRGUN. ATTEMPTS TO MODIFY THE AIRGUN IN ANY WAY INCONSISTENT WITH THIS MANUAL MAY MAKE YOUR AIRGUN UNSAFE TO USE, CAUSE SERIOUS INJURY OR DEATH, AND WILL MAKE THE WARRANTY INACTIVE.

WARNING! DO NOT ATTEMPT TO REPAIR YOUR AIRGUN OR TO DISASSEMBLE TO CORRECT AN OVER-FILL OR VALVE LOCK. PARTS MAY FLY OUT FROM THE AIRGUN AT DANGEROUS SPEEDS IF IT IS DISASSEMBLED WHILE PRESSURIZED.

I. COCKING LEVER REPLACEMENT

1. Remove the cover of the cocking lever.
2. Remove the barrel shroud. (Clockwise)
3. Remove the nut that holds the barrel and disassemble the barrel.
4. Remove the top cover on the other side.
5. Remove the picatinny rail on the top.
6. Remove the side screws on the body.
7. Remove the rear side by sliding the top body.
8. Remove the screw that holds the cocking lever with a screwdriver.
9. After switching the side of the cocking lever, replace the screw.

J. MAINTENANCE

- Apply Reximex silicone chamber oil on the barrel breech and O-rings every 3 months or 500 shots.
- Periodically check your airgun. If anything feels different, like a shorter or weaker trigger pull, this may mean worn out or broken parts, call Reximex customer service for assistance before re-using your airgun.

REPLACEMENT OF O-RINGS

After a period of time, the O-rings on the fill probe will need to be replaced. The need for this will become noticeable if air is heard leaking from the nozzle while charging the airgun.

LUBRICANT

General: Keep the airgun clean and wipe it off with regular gun oil and a cloth occasionally.

Fill probe: Apply a thin layer of suitable mineral based oil occasionally or when dried out.

Magazines: Apply a thin layer of suitable mineral based oil occasionally or when dried out.

Cocking handle and Sidelever Sliding Surface: Apply a thin layer of a standard multipurpose grease occasionally or when dried out.

WARNING: Never use grease or spray oil in the moving parts inside the gun.

This can result in unstable power and also leakage. Be moderate with lubricant.

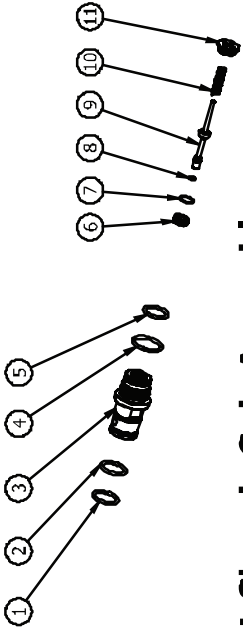
K. STORAGE

Store in a place that is dry and dark. Store with air pressure between 50-100 bar in the airgun.

WARNING!

- Keep away from spaces with high humidity as steel parts might corrode.
- Keep away from bright sunlight as this shortens the life of the O-rings.
- Never store the airgun loaded with pellets.

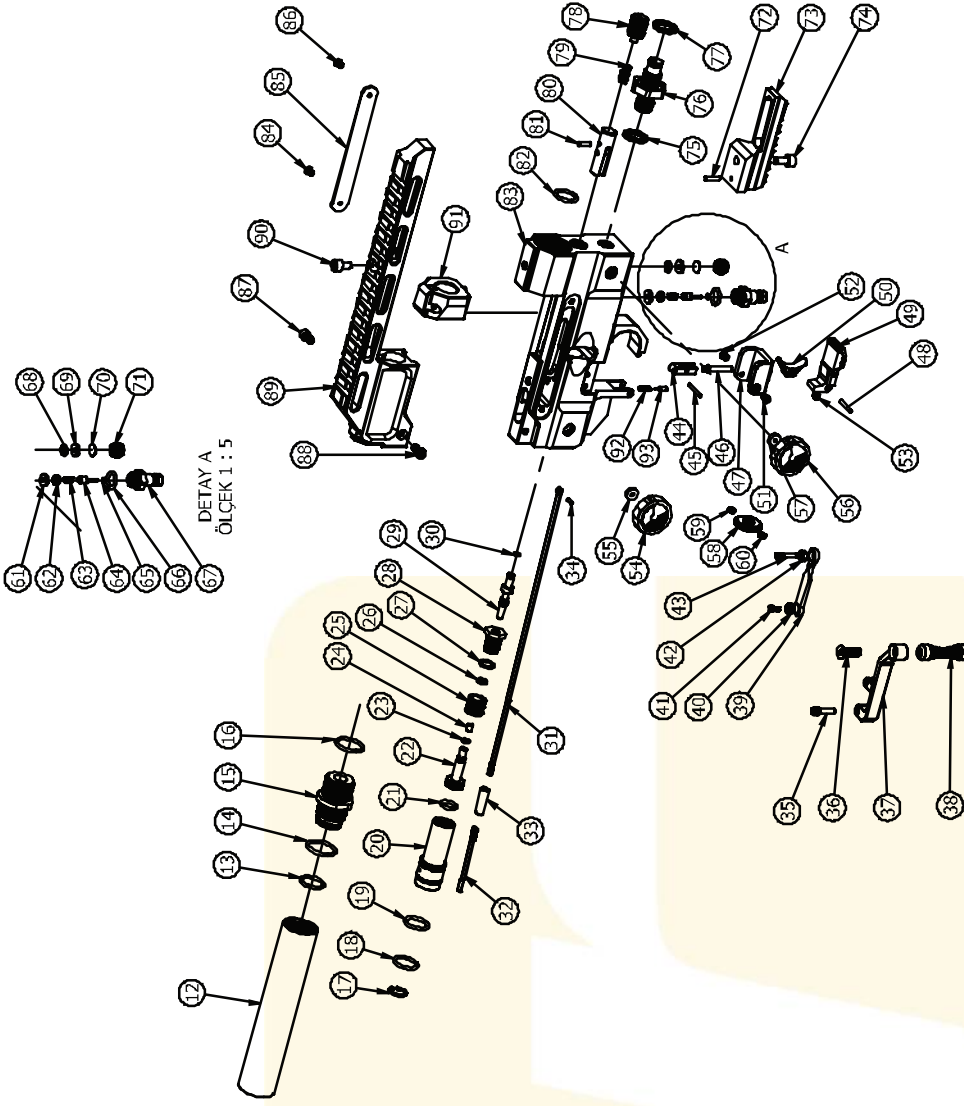
Please Visit www.reximex.com for more information & "How to?" videos.



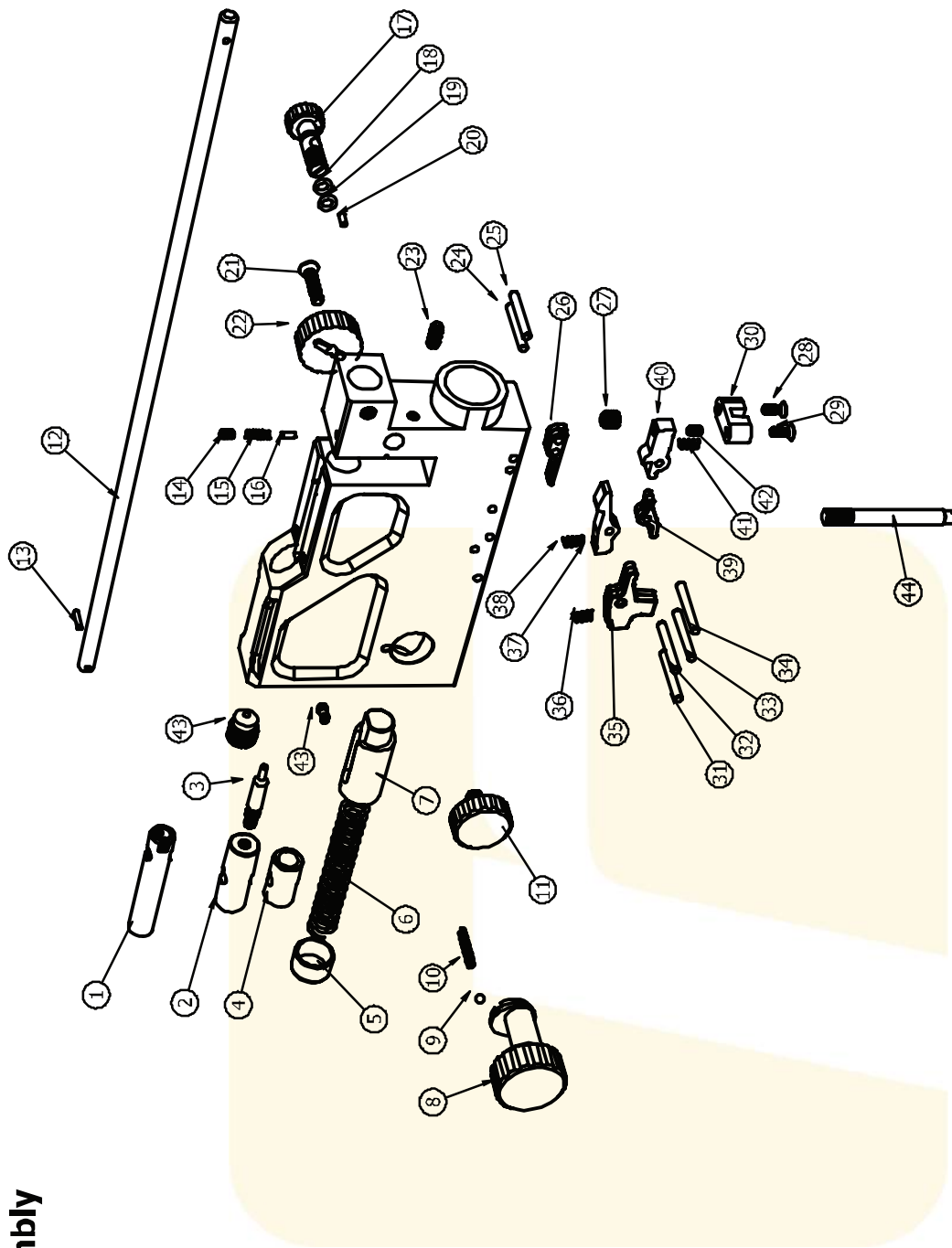
1-0-0 Front Chassis Sub-Assembly

NO	Code	Name
1	1-1-1	O-Ring - 16x2.0
2	1-1-2	O-Ring - 16x2.0
3	1-1-3	Pre Chamber Rear Valve Body
4	1-1-4	O-Ring - 19x2.0
5	1-1-5	O-Ring - 15x2.0
6	1-1-6	Valve Rest
7	1-1-7	O-Ring - 9x1.0
8	1-1-8	O-Ring - 3x1.0
9	1-1-9	Hammer Valve
10	1-1-10	Hammer Valve Spring
11	1-1-11	Hammer Valve Guide
12	1-1-12	O-Ring - 15x2.0
13	1-1-13	O-Ring - 15x2.0
14	1-1-14	O-Ring - 19x2.0
15	1-1-15	Pre Chamber Front Coupling
16	1-1-16	O-Ring - 18x2.0
17	1-1-17	13.70mm Snap Ring
18	1-1-18	O-Ring - 15x2.0
19	1-1-19	O-Ring - 15x2.0
20	1-1-20	Regulator Body
21	1-1-21	O-Ring - 9x2.0
22	1-1-22	Regulator Valve
23	1-1-23	O-Ring - 3.50x1.50
24	1-1-24	Regulator Valve Defrin Pad
25	1-1-25	Regulator Disc Spring
26	1-1-26	O-Ring - 4x2
27	1-1-27	O-Ring - 9x1.50
28	1-1-28	Regulator Pad Housing
29	1-1-29	Regulator Valve Pad
30	1-1-30	O-Ring - 2x1.50
31	1-1-31	Trigger Rod P1
32	1-1-32	Trigger Rod P2
33	1-1-33	Trigger Adjustment Coupling
34	1-1-34	2x6 Pin (ISO 8734)
35	1-1-35	Cocking Lever Pin
36	1-1-36	M5x8 Countersunk Screw
37	1-1-37	Cocking Lever
38	1-1-38	Cocking Lever Grip
39	1-1-39	Cocking Lever Package
40	1-1-40	Ball Bearing 3x7x3
41	1-1-41	Cocking Lever Pin Short
42	1-1-42	Ball Bearing 3x7x3
43	1-1-43	Cocking Lever Front Pin
44	1-1-44	Trigger Finger Rest Pin Mount
45	1-1-45	2x18 Pin (ISO 8734)
46	1-1-46	Trigger Finger Rest Pin
47	1-1-47	Trigger Cover
48	1-1-48	2x16 Pin (ISO 8734)
49	1-1-49	Safety Switch
50	1-1-50	Trigger Finger Rest
51	1-1-51	M5x3 Countersunk Screw
52	1-1-52	M5x3 Countersunk Screw
53	1-1-53	M5x8 Pressure Gauge
54	1-1-54	Pressure Gauge

NO	Code	Name
55	1-1-55	Pressure Gauge Pad
56	1-1-56	Pressure Gauge
57	1-1-57	Pressure Gauge Pad
58	1-1-58	Regulator Adjustment Spring
59	1-1-59	M3x5 Set Screw
60	1-1-60	M3x5 Set Screw
61	1-1-61	Filling Port Pad
62	1-1-62	Filling Port Screw
63	1-1-63	Filling Port Spring
64	1-1-64	Filling Port Valve
65	1-1-65	O-Ring - 1.8x1.0
66	1-1-66	O-Ring - 9x2
67	1-1-67	Filling Port
68	1-1-68	O-Ring - 5.5x1x5
69	1-1-69	Safety Screw Pad
70	1-1-70	Copper Burst Disc
71	1-1-71	Safety Screw
72	1-1-72	2.5x12 Pin (ISO 8734)
73	1-1-73	Lower Picatinny
74	1-1-74	M5x10 Imbus Screw
75	1-1-75	M10 Seal Washer
76	1-1-76	Air Bottle Connection Block 2E
77	1-1-77	M10 Seal Washer
78	1-1-78	C. Lever Counter-Spring Base
79	1-1-79	Cocking Lever Counter-Spring
80	1-1-80	Cocking Lever Rail
81	1-1-81	3x10 Pin (ISO 8734)
82	1-1-82	O-Ring - 14x2
83	1-1-83	Front Chassis
84	1-1-84	M3x3 Countersunk Screw
85	1-1-85	Cocking Lever Slot Lid
86	1-1-86	M3x3 Countersunk Screw
87	1-1-87	M4x8 Imbus Screw
88	1-1-88	M4x8 Imbus Screw
89	1-1-89	Upper Picatinny
90	1-1-90	M5x8 Imbus Screw
91	1-1-91	Rod Connection Base
92	1-1-92	Safety Spring
93	1-1-93	Safety Catch Pin

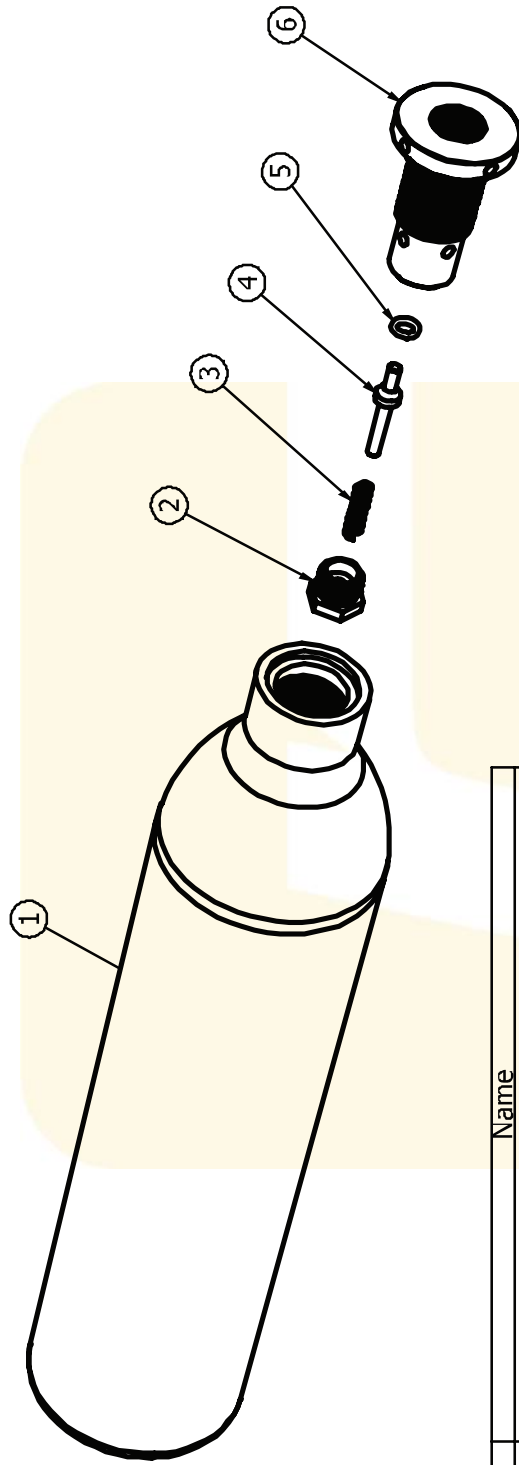


2-0-0 Rear Chassis Sub-Assembly



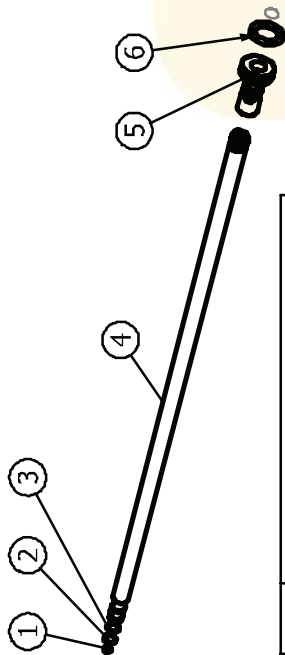
NO	Code	Name
1	2-1-1	Rod Base
2	2-1-2	Pellet Pusher Base
3	2-1-3	Pellet Pusher
4	2-1-4	Connection Stick Guide
5	2-1-5	Hammer Spring Base
6	2-1-6	Hammer Spring
7	2-1-7	Hammer
8	2-1-8	Hammer Adjustment Switch
9	2-1-9	3mm Ball
10	2-1-10	Hammer Adjustment Switch Spring
11	2-1-11	Barrell Fixing Screw
12	2-1-12	Rod
13	2-1-13	2x9 Pin (ISO 8734)
14	2-1-14	M3x5 SetScrew
15	2-1-15	Power Adjsutumt Catch Spring
16	2-1-16	2x5 Pin (ISO 8734)
17	2-1-17	Power Adjsutumt Valve
18	2-1-18	O-Ring 4x1.5
19	2-1-19	O-Ring 4x1.5
20	2-1-20	2x6 Pin (ISO 8734)
21	2-1-21	M4x20 Countersunk SetScrew
22	2-1-22	Hammer Adjustment Switch Fixing Piece
23	2-1-23	M4x9 SetScrew with Ball
24	2-1-24	3x24 Pin (ISO 8734)
25	2-1-25	3x24 Pin (ISO 8734)
26	2-1-26	Base for Trigger Spring
27	2-1-27	M6x6 SetScrew
28	2-1-28	M3x8 Countersunk Screw
29	2-1-29	M3x8 Countersunk Screw
30	2-1-30	Trigger Rod Bridge
31	2-1-31	3x24 Pin (ISO 8734)
32	2-1-32	3x24 Pin (ISO 8734)
33	2-1-33	3x24 Pin (ISO 8734)
34	2-1-34	3x24 Pin (ISO 8734)
35	2-1-35	Rear Trigger
36	2-1-36	Rear Trigger Spring
37	2-1-37	Hammer Holder
38	2-1-38	Hammer Holder Spring
39	2-1-39	Rear Trigger Lever
40	2-1-40	Hammer Holder Sear
41	2-1-41	Hammer Holder Sear Spring
42	2-1-42	M3x5 SetScrew
43	2-1-43	Hammer Axis Guiding Screw
44	2-1-44	Vertical Connection Column
45	2-1-45	Cocking Lever Stopper

5-0-0 Air Bottle Sub-Assembly



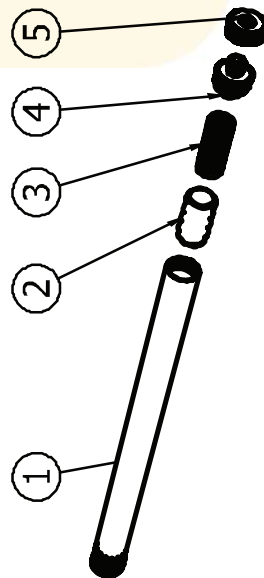
NO	Code	Name
1	5-1-1	Air Bottle
2	5-1-2	Bottle Spring Rear Cap
3	5-1-3	Air Bottle Spring
4	5-1-4	Air Bottle Valve
5	5-1-5	O-Ring 4x1.5
6	5-1-6	Bottle Valve Housing

3-0-0 Barrell Sub-Assembly



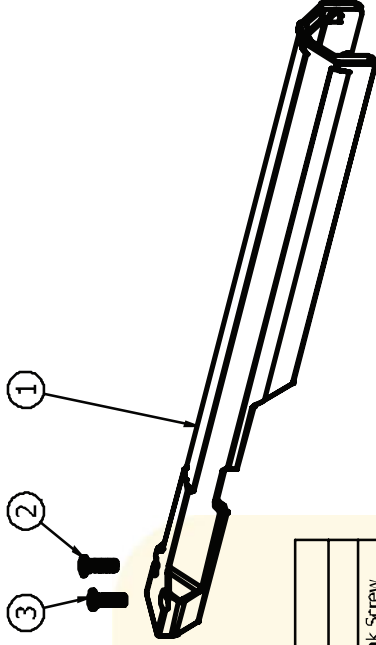
NO	Code	Name
1	3-1-1	O-Ring 5x1.5
2	3-1-2	O-Ring 9x1.5
3	3-1-3	O-Ring 9x1.5
4	3-1-4	Barrell
5	3-1-5	Moderator Tip
6	3-1-6	O-Ring 18x4

4-0-0 Barrell Casing Sub-Assembly



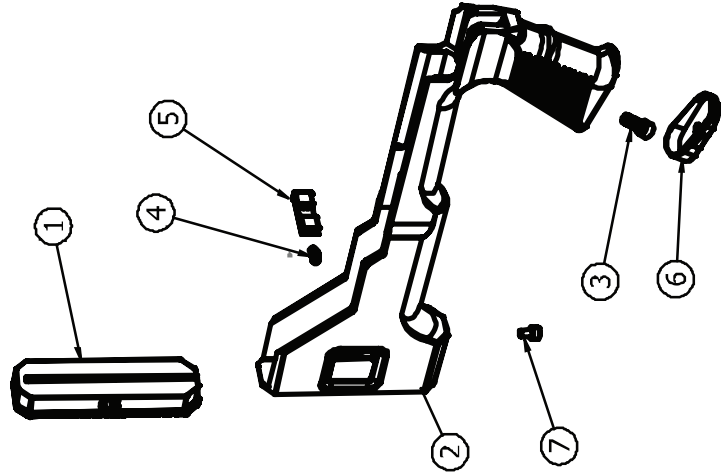
NO	Code	Name
1	4-1-1	Barrell Casing
2	4-1-2	Suppressor Wrap
3	4-1-3	Suppressor Wrap Core
4	4-1-4	Casing Cap Adapter
5	4-1-5	Casing Cap

7-0-0 Cheek Rest Sub-Assembly



NO	Code	Name
1	7-1-1	Cheek Rest
2	7-1-2	M3x10 Sockethead Countersunk Screw
3	7-1-3	M3x10 Sockethead Countersunk Screw

6-0-0 Stock Sub-Assembly




NO	Code	Name
1	6-1-1	Shoulder Rest
2	6-1-2	Stock
3	6-1-3	M6x16 Imbus Screw
4	6-1-4	Adjustment Button Spring
5	6-1-5	Adjustment Button
6	6-1-6	Grip Lid
7	6-1-7	M5x8 Imbus Screw




reximex



REXIMEX İt. İh. Av Malz. Sav. San. Tic. Ltd. Şti.

 Bayavşar Mahallesi 41958. Sokak No:3 Beyşehir / Konya

 0332 511 0055  info@reximex.com

 www.reximex.com



[/Reximexarms](https://www.facebook.com/Reximexarms)



[/Reximexarms](https://www.youtube.com/Reximexarms)



[/Reximexarms](https://www.instagram.com/Reximexarms)