



# Outdoor Thermographic Telescope

## User manual



Dongguan Xintai Instrument Co.,Ltd.

① Add: Building16, No.3, Yongtai Road, TangxiaTown, Dongguan  
City, Guangdong, China

Postal code: 523710

📞 Tel: +86-769-82612006

📠 Fax: +86-769-82612005

🌐 Website: [www.hti-meter.com](http://www.hti-meter.com)

[www.hytechn.com.cn](http://www.hytechn.com.cn) [www.xintest.en.alibaba.com](http://www.xintest.en.alibaba.com)

User Manual Version 2.0. July 12 · 2023.

HT-A3

HT-A4

## Table of Content

Overview.....	1
Considerations and Safety Maintenance.....	2
Performance Index.....	3
Product Structure.....	4
Operating Description.....	6
Battery Charging Instructions.....	9
Indicator Light.....	9
Application of Amplification.....	9
Application of Color Palette.....	10
Operation Methods for WIFI Functions.....	11
After-sale Service of the Product.....	14

## Overview

This product is Outdoor Thermographic Telescope device adopts advance non-cooled focal plane infrared detector and quality optical lenses as the core. With the characteristics of convenient and quick operating system, small appearance design, expansion parts with perfect function, long duration of use, it is sturdy and durable and applicable to all types of environments and provides an ideal temperature measurement tool featuring “clear imaging, precise measurement, simple operation and easy to carry”. This is the best selection for onsite detection, preventive maintenance and other application sites.

The product may be used for outdoor animal observation, search and rescue, law enforcement detection for policemen, night patrol, outdoor activities and personal security, etc. The product is provided with the photographing function. The photos may be browsed by connecting with a computer through USB to make it convenient for observation of many persons at the same time, which creates possibility for application in more occasions.

## Considerations and Safety Maintenance

**Please read the user manual carefully in order to use the product correctly:**

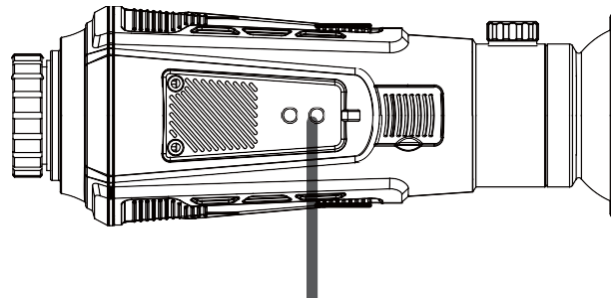
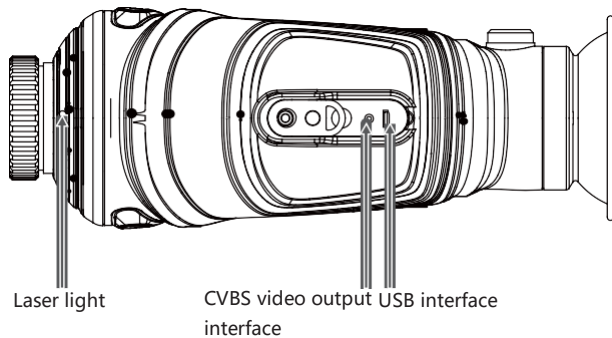
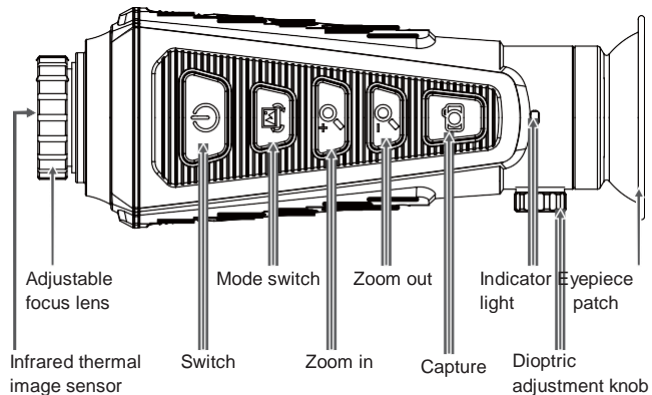
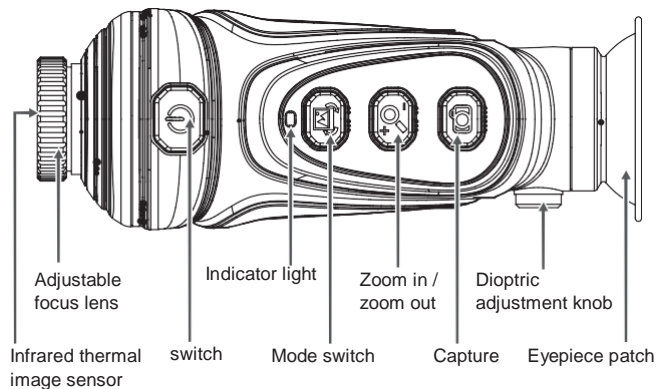
- Don't use the product in explosive, flammable, damp or corrosive environment.
- The product contains precision electronic and sensitive optical devices. Don't impact and drop it to avoid damage.
- Don't dismantle and remodel the product without permission. Please use damp cloth or weak soap to clean the enclosure of the device.
- Don't use abrasant, isopropanol or solvent to clean. The lens and screen should be cleaned with use of professional optical glasses.
- When the product works, slight click will be given out every several seconds. This is the normal phenomenon that the lens captures the image.

## Performance Index

	Infrared objective	25mm	35mm	54mm	75mm
Detection range	Character	≤1667m	≤2333m	≤3600m	≤5000m
	Wild boar	≤1471m	≤2059m	≤3176m	≤4412m
	Vehicle	≤2501m	≤3500m	≤5400m	≤7500m
Recognition distance	Character	≤416m	≤583m	≤900m	≤1250m
	Wild boar	≤367m	≤515m	≤794m	≤1103m
	Vehicle	≤626m	≤875m	≤1350m	≤1875m

Model	HT-A3	HT-A4
Product weight	440g	541.2g
Product size	186x69x68 mm	187.3x68x68.2mm
Probe type	Uncooled focal plane	
Resolution ratio	384x288 infrared focal plane	
LCD resolution	720X540	
Focus length	19mm ; 25mm ; 35mm	
Eyepiece	Single eyepiece display (the dioptic compensation is adjustable)	
Field angle	19.5°x14.7° ; 14.9°x11.2° ; 10.7°x 8°	
Digital zoom	2X ; 4X	
Wavelength coverage	8μm-14μm	
Frame rate of thermal images	60Hz	
Color palette	Rainbow/Hot metal/white hot/black hot/ Yellow saturation and/Bird watching mode.	
Focusing mode	Adjustable	
Image storage	BMP	
Battery	Built-in rechargeable batteries	
USB	Micro USB	
Working time	≥15 hours	
Work temperature	0°C - 45°C	
Storage temperature	-20°C - 60°C	

# Product Structure



Remark: HT-A4 product does not have laser light


( HT-A3 )





( HT-A4 )

## Operating Description

- Charging: the product is provided with built-in battery. When the battery power is not sufficient, please charge it through Micro USB interface in time.
- Power on/off: hold down " " key to power on /off.
- Image capture: Press " " key to capture the image. The screen will show " ✓" prompt, indicating that image capture is successful.
- ( HT-A3 ) Image review:After powering on, short press the " " key to enter the image viewing mode (the image shows the last imagetaken), press the " " key to view the previous image, press the " " key to view the next image, and press the " " key to exit Image viewing mode.
- ( HT-A4 ) Image review:After powering on, short press the " " key to enter the image viewing mode (the image shows the last image taken), press the " " key to view the previous image, press the " " key to view the next image, and press the " " key to exit Image viewing mode.
- Delete image: After entering the image viewing mode, press

- Image Export: Capture and save images can be viewed and exported via a Micro USB connection to a computer.
- Horizontal switching: Press the " " key to switch among six imaging modes: Rainbow, Hot Metal, White Hot, Black Hot, Yellow Saturation and Bird Watching Mode.
- CVBS video output: Press and hold the " " key to switch to CVBS video output. Press and hold again to return to the local display.
- ( HT-A3 ) Zoom in / out: Under the power-on state, press the " " key, and each time you press it, the target of "2X, 4X" will be gradually enlarged and displayed. Press again to return to the normal state.
- ( HT-A4 ) Zoom in/out: In the power-on state, press the " " key, and the target of "2X, 4X" will appear gradually enlarged and displayed every time you press it. When the target is maximized, press " " to zoom out 2X, 1X (the zoom out function can only be used after the image is enlarged).

and hold the “” key to delete the currently viewed image.

- ( HT-A3 ) Brightness adjustment of the display screen: Under the power-on state, press and hold the "  key to adjust the brightness. Each long press adjusts the brightness by 1 level.
- ( HT-A4 ) The brightness adjustment of the display screen: In the power-on state, long press the "  " key to increase the brightness, long press the "  " key to decrease the brightness, and adjust the brightness level 1 for each long press.
- ( HT-A3 ) Laser light on / off: In the power-on state, press and hold the "  " key to turn on the laser light, and long press it again to turn it off.
- Diopter adjustment: Rotate the diopter adjustment button left and right to adjust the diopter for yourself.
- Focusable lens: Rotate the focus lens button left and right to focus. Rotate clockwise for near focus and counterclockwise for far focus.

## Battery Charging Instructions

Use USB data line to charge:

This product has a built-in rechargeable battery.

When the battery is low, please charge it in time via the Micro USB port.

After fully charged, unplug the USB cable.

Note: When the battery is completely empty, there will be an abnormality. It is recommended to use the battery when it is sufficient.

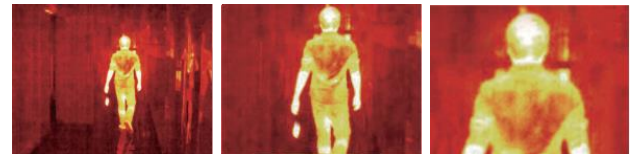
## Indicator Light

Status	Not being charged	In charging	Fully charged
Power on	Blue	Red blue (purple)	Blue
Power off	None	Red	None

## Application of Amplification

The magnification function may be utilized when remote objective is photographed so as to observe the objective clearly.

The effect picture is as follows:



Normal

2X

4X

## Application of Color Palette

The color palette menu can change the false color of the infrared thermal image and provide 6 color palettes, namely: Rainbow, Hot Metal, White hot, Black hot, Yellow Saturation and Bird Watching Mode.

The selection of proper color palette can show the details of target object in a better manner. The color palette of rainbow and Hot metal focuses on display of color and is very suitable for the condition of high heat contrast and used to improve color contrast between high temperature and low temperature. But the white heat color palettes provide even linear color.

Image effects taken by six kinds of color palettes:



Rainbow

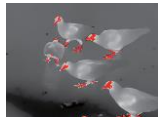
Hot metal

white hot

Black hot

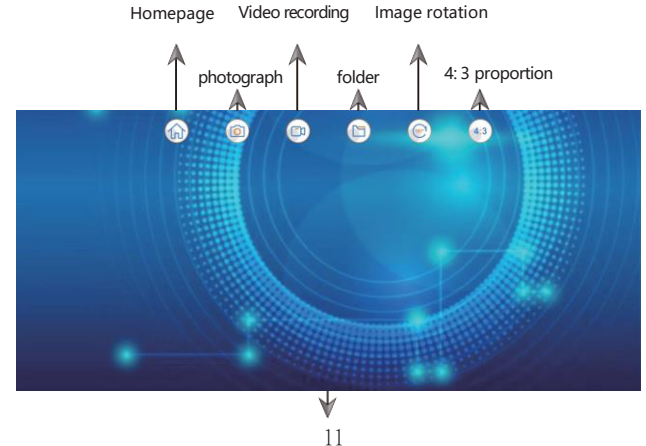



Yellow saturation



Bird watching mode

## Operation Methods for WIFI Functions

1. Press the “

Homepage    Video recording    Image rotation


photograph    folder    4:3 proportion

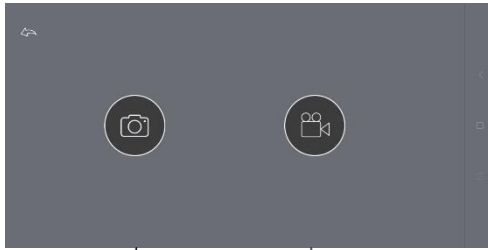
11



Imaging area



### 7. Checking pictures/videos

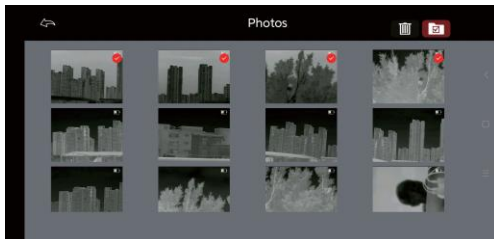
Tap icon  to enter into interface of pictures/videos checking. Pick pictures/videos folder to get into pictures/videos previewing. Press picked pictures/videos to check. Swipe left /right to switch pictures.




pictures folder    videos folder

### 8. Deleting pictures/videos

Open the pictures/videos folder and then tap icon  at upper right corner. Click to choose the pictures/videos you want to delete. After that, push icon  and then a confirmation dialog box will show up. Tap "yes" and the chosen pictures/videos will be deleted.



9. Open any picture/video, click the Share button in the upper right corner , and send the picture or video through Bluetooth or other apps (the selected APP must have the function of sending files).



## After-sale Service of the Product

Respected customers:

Thank you for purchasing the product of our company. The product carries a warranty period from the date of sale.

During the warranty period of the product, if installation and use is made according to the user manual at normal environment and conditions, users may enjoy free repair service by warranty voucher for faulty product caused by raw materials and manufacturing process. The warranty voucher should be kept properly by the users and will not be reissued if lost.

In order to avoid problems during the use process, our company suggests that you familiarize with the user manual of the product first before the product is used.

The following conditions are not within the warranty scope:

1. Unable to show the original of effective warranty voucher.
2. The product installation does not comply with product requirements and relevant specification, which causes damage;
3. The damage is caused due to that users use and store it improperly or dismantle and repair it without permission and other reasons;
4. Damage caused by natural disasters (earthquake, flood and lightning stroke) and external disasters;
5. Exceed the warranty period.

Considerations:

1. If the product malfunction, repair or replacement with new or good product is made according to the condition after the product is inspected.
2. For product exceeding the warranty period, determine whether to repair or replace the part after inspection for the product is performed. Relevant expense will be charged for all types of repair and replacement of parts and components according to actual condition.

1. The product enjoys warranty service within one year from the purchase date if it is used normally and not dismantled and is confirmed by warranty personnel for product quality problem. Repair will be provided at any condition.			
2. The warranty voucher should be filled at the time of purchase. It should be carried for product maintenance.			
Customer's name	Purchase date	Product type	Distributor
Warranty record:			