

GUIDE

Enduring Performance, Day and Night

TR Series Thermal Imaging Scope

Introduction

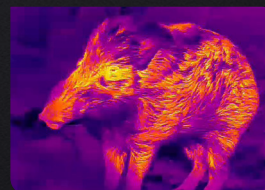
TR Series is an economical civilian infrared thermal imaging scope that adopts high sensitivity thermal detector with three different lens options of 25 mm, 35 mm, 50 mm. The TR Series offers sharp and detailed images while retaining the accuracy. TR thermal scope also features with compact size, waterproof and dustproof, high shock resistance, rugged and durable, which performs impressively in any harsh weather.

Features

- Fast and easy replaceable 18650 battery for 8 hours of operation
- 1024x768 resolution HD AMOLED display for image detail
- Support photo and video, record wonderful moments at any time, easy to share
- Screen freezing for quick and easy zeroing
- Support device firmware updates by connecting TargetIR APP
- Get precise 600m laser ranging using an external range finder
- A wide range of operating temperatures (-30°C to 50°C)
- IP 67 dustproof and waterproof rated

Applications

- Night Hunting
- Law Enforcement
- Search & Rescue
- Personal security



Specifications

Product model	TR420	TR430	TR450	TR620	TR630	TR650
Sensor						
Type	Uncooled VOx Infrared Detector, 8 to 14 μm					
Resolution	384×288@12 μm			640×480@12 μm		
NETD	30mK					
Frame rate	50 Hz					
Lens						
Objective lens	25mm, F1.0	35mm, F1.0	50mm, F1.0	25mm, F1.0	35mm, F1.0	50mm, F1.0
Field of view	10.44°×7.87°	7.50°×5.64°	5.27°×3.95°	17.08°×13.03°	12.38°×9.38°	8.73°×6.60°
FOV m @100m	18×14	13×10	9×7	30×23	22×16	15×12
Magnification	2.4x~9.6x	3.3x~13.2x	4.7x~18.8x	1.4x~11.2x	2.0x~16x	2.8x~22.4x
Detection range	1300m/ 1400yd	1800m/ 1950yd	2600m/ 2800yd	1300m/ 1400yd	1800m/ 1950yd	2600m/ 2800yd
Display						
Display type	0.39" AMOLED 1024×768					
Color palettes	White Hot, Black Hot, Red Hot, Green Hot, Iron Red, Blue Hot					
Eyepiece	Exit pupil distance 48 mm; Diopter \pm 4; Zoom: 14x					
Hardware						
WIFI	2.4G					
Interface	USB Type-C					
System						
Recording function	Photo/Video					
Memory capacity	32GB					
Power						
Battery type	Single, replaceable 18650 battery					
Operating time	8 hours					
Environmental						
Operating temp.	-30 °C to 50 °C/ -22°F to +122°F					
Shock	800 G at 1 ms half sine pulse (as per IEC60068-2-27)					
Encapsulation	IP67					
Physical						
Weight(g/ oz)	540/ 19.05		590/ 20.81	540/ 19.05		590/ 20.81
Size(mm/ in)	202×88×66/ 7.95×3.46×2.60	208×88×66/ 8.19×3.46×2.60	219×88×66/ 8.62×3.46×2.60	202×88×66/ 7.95×3.46×2.60	208×88×66/ 8.19×3.46×2.60	219×88×66/ 8.62×3.46×2.60
Standard	Device, Sight base (Choose from two specifications), Type-C cable, 5V2A adapter (US, Britain, Australia and Europe), 18650 battery, Battery charger, Lens cover, Eye mask, Quick start guide, Warranty card					
Optional	18650 battery, Dovetail guide, Bluetooth remote control, Laser rangefinder					